

# TRANSPORT, COMMUNICATION, CAR PARKS



# Transport Policy



❖ Act no. XVIII/225//07 Krakow City Council 4. of July 2007 concerning adopting Transport Policy for Krakow City for 2007 – 2015.

## Main objective

*Creating conditions for more efficient and safer communication of people and goods, complying with the requirements related to reduction of environment nuisance caused by transport, and as a result the improvement of communication accessibility inside the city and metropolitan areas of voivodeship and the country*

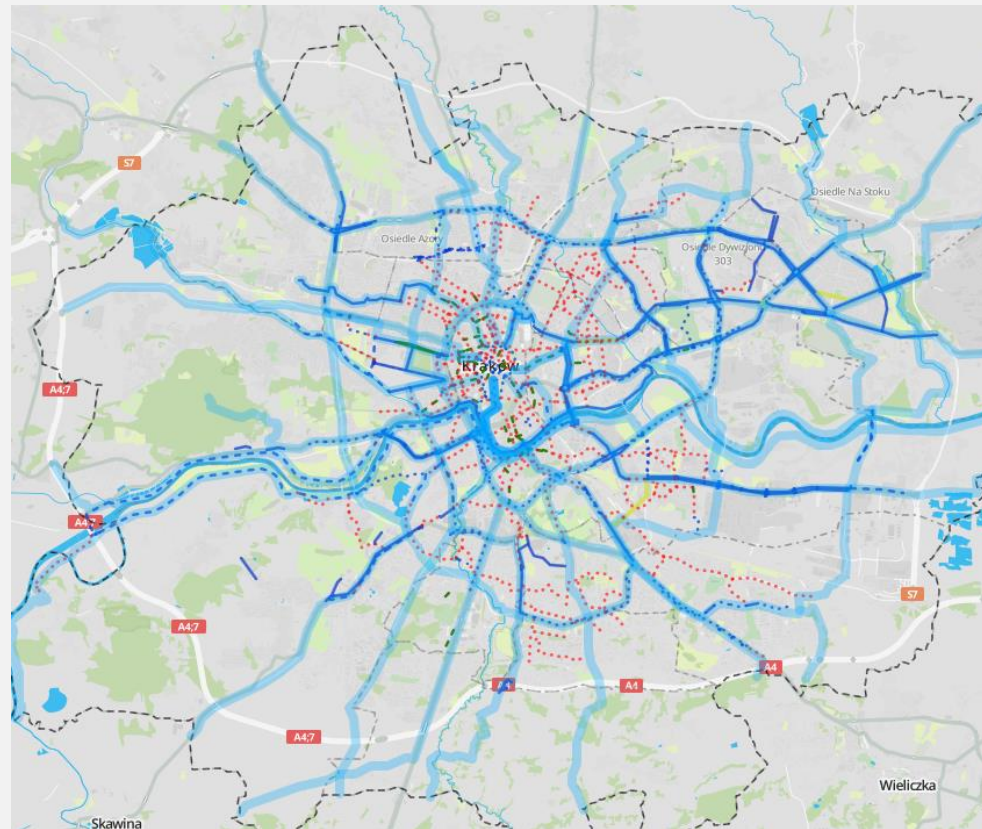
## **Specific objectives:**

1. Ensuring the effectiveness of the city transport system as balanced economically, environmentally and socially.
2. Further reinforcement of the function of public transport and improvement of its quality.
3. Creating an integrated metropolitan system, ensuring accessibility in the arrangement of the region, the country, and Europe.



# Bicycle lanes

- ❖ By the year 2015, 160 km of bicycle lanes have been built.

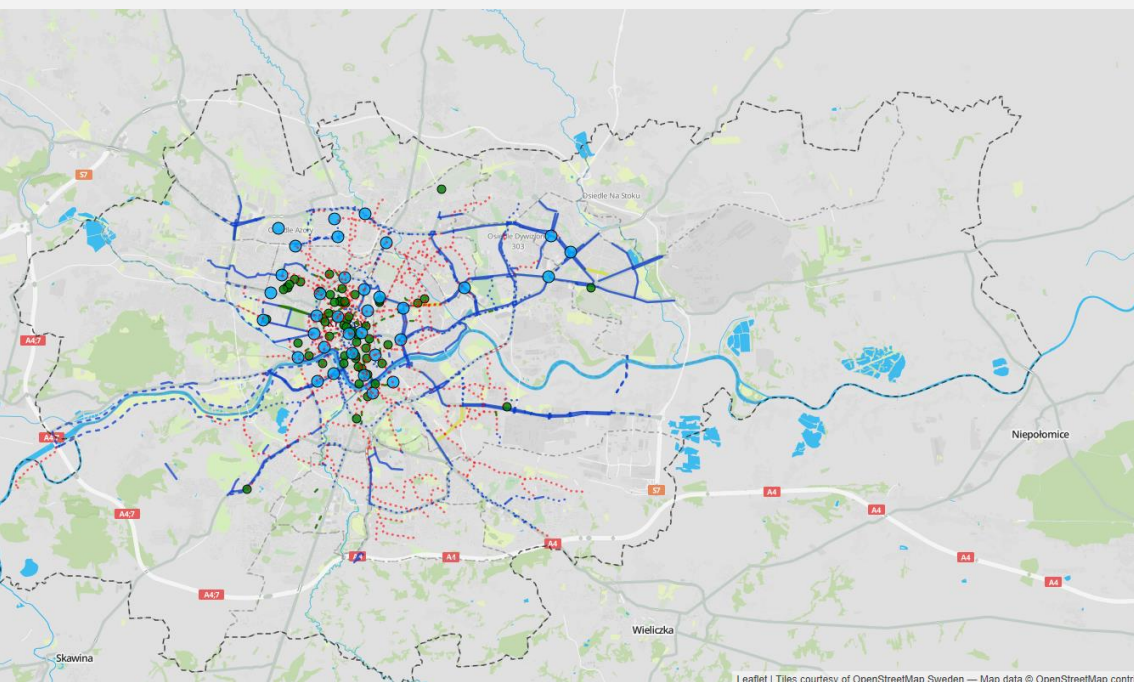


**INFO:**  
Bicycle routes  
Bicycles&pedestrians routes  
Pedestrians routes with possible bicycle traffic  
Bicycle lane  
Contra road bicycle lane  
Suggested route traffic

**Legenda**  
— droga dla rowerów  
- - - - - ciąg pieszo-rowerowy  
..... ciąg pieszy z dopuszczonym ruchem rowerowym  
— pas rowerowy  
- - - - - kontrapas  
..... sugerowana trasa w ruchu ogólnym

# Parkings for bicycles

❖ In Krakow a Public Bicycle system including 34 stations and 300 bicycles is operating



Leaflet | Tiles courtesy of OoenStreetMap Sweden — Map data © OoenStreetMap contrit

- Bicycle stands
- Bicycle stations



# Krakow public transport in numbers

- ❖ the length of singular tram railway – 190 km
- ❖ two tram depots: Podgórze and Nowa Huta and Św. Wawrzyńca terminal for historical wagons
- ❖ 24 tram terminals
- ❖ 357 tram stations
- ❖ 24 day tram lines and 3 night lines of culmative length of 343 km



# Krakow public transport in numbers (2)

- ❖ two transporters: Public Transport Company SA in Krakow and Mobilis
- ❖ three bus depots: Bieńczyce, Płaszów and Wola Duchacka operated by MPK SA in Krakow
- ❖ one bus depot in Czyżyny district (a property of Mobilis )
- ❖ 181 bus lines of culmative length of 2092 km
- ❖ two bus terminals (Czyżyny and Krowodrza Górka) and 1369 bus stations

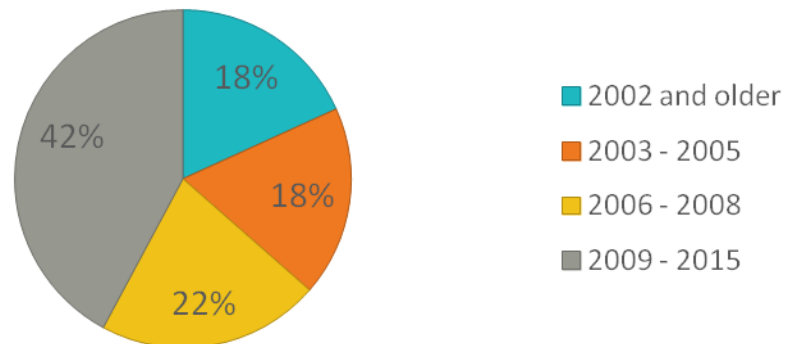


Miejskie Przedsiębiorstwo  
Komunikacyjne S.A. w Krakowie



# Krakow public transport – bus stock

Year of production	2002 i starsze	2003 - 2005	2006 - 2008	2009 - 2015
Number of buses	103	103	121 <sup>1</sup>	238 <sup>2,3</sup>



EURO Norm	1	2	3	4	5	EEV	6
Number of buses	2	98	172	10 <sup>1</sup>	64 <sup>2</sup>	114	105 <sup>3</sup>
Percentage share	0,4%	17,3%	30,4%	1,8%	11,3%	20,2%	18,6%

<sup>1</sup> including five CNG fueled buses

<sup>2</sup> including one hibrid bus

<sup>3</sup> including 67 Mobilis vehicles



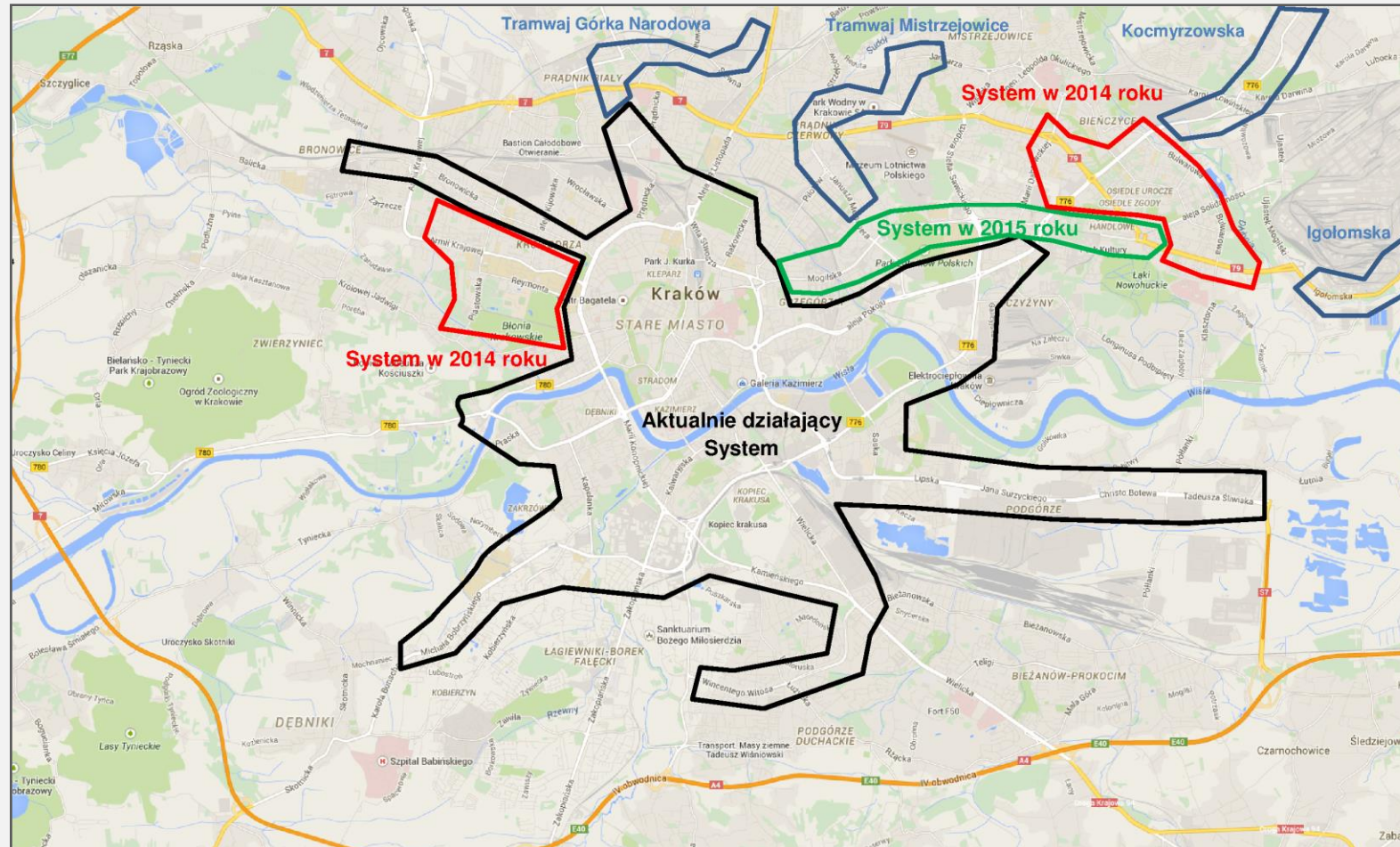


# Krakow public transport – bus stock plans

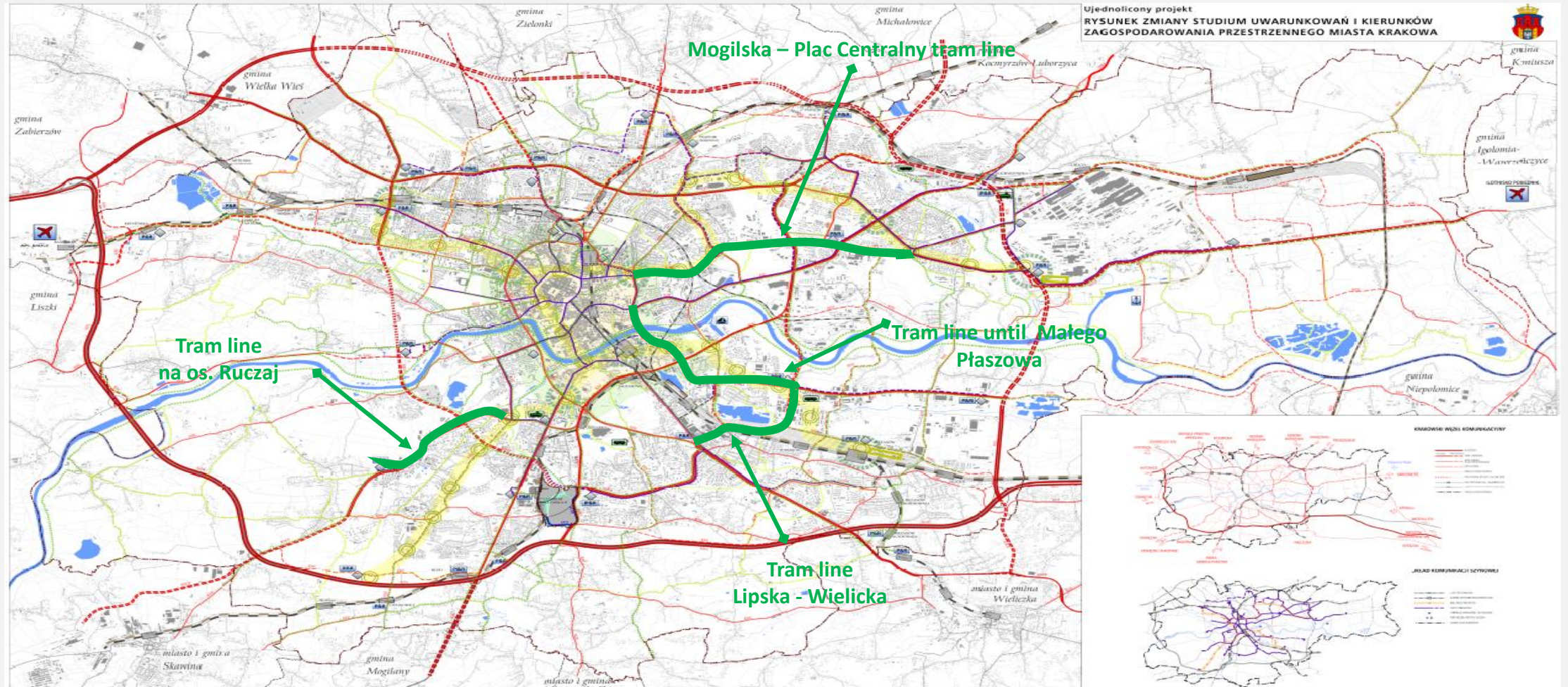
- ❖ Purchase of low-floor bus stock in order to increase the effectiveness and improve the quality of Krakow public transport – Infrastructure and Environment Operational Programme 2014-2020, (part I – 32 trams, part II – 10 trams)
- ❖ Purchase of low-emission and low-floor buses and stationary ticket machines for operating agglomeration lines, Regional Operational Programme of Małopolskie Voivodeship 2014-2020, 120 buses (including 6 hibrid and 20 electric)



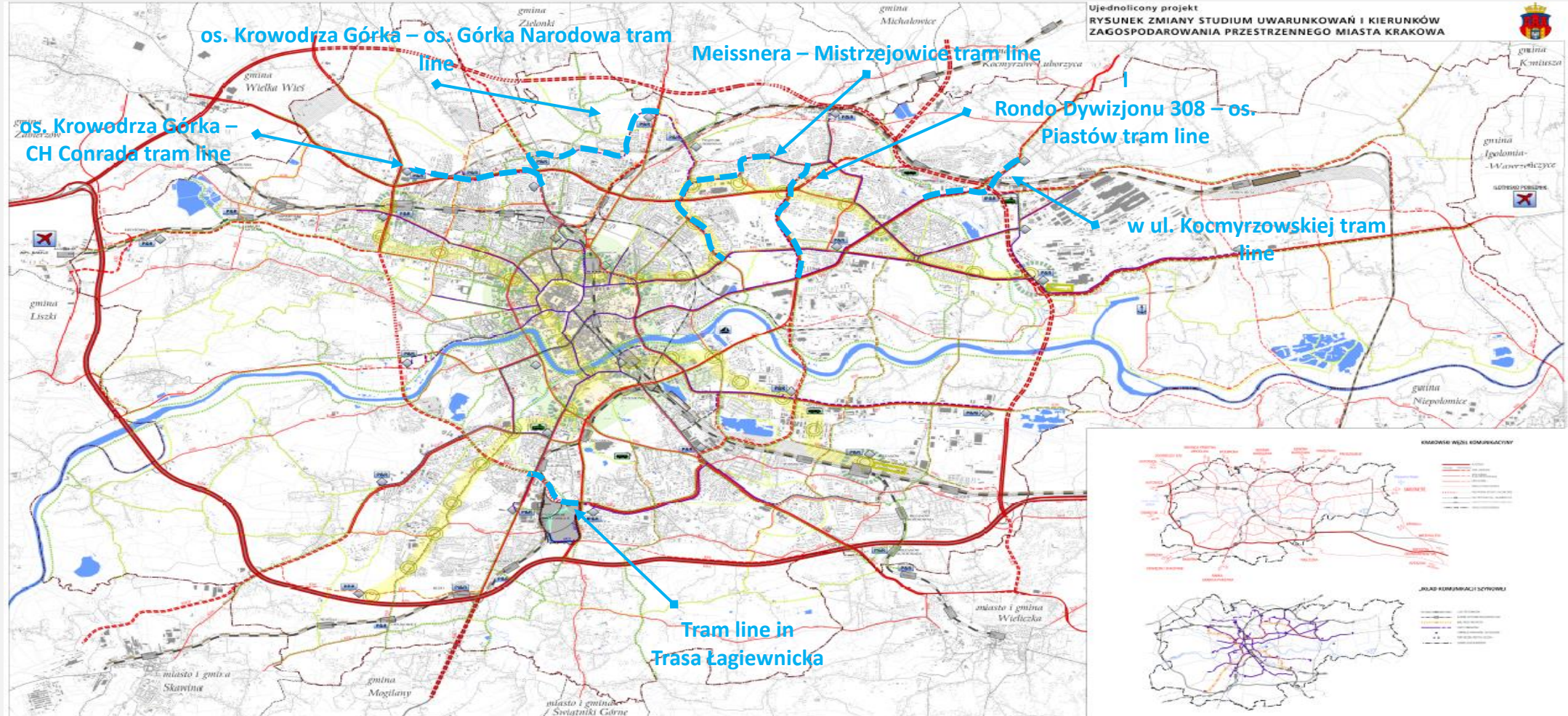
# Traffic control system



# Public transport investments (1)



# Public transport investments (2)



# Parking policy

- ❖ Parking operation programme for Krakow (act no LIII/723/12 Krakow City Council 29. of August 2012)
- ❖ In the central area locations for 27 car parks have been proposed for cumulative number of approximately 7520 cars and 19 locations set out in earlier drafts of capacity for approximately 9006 parking spots.
- ❖ Currently an update of the document is being carried out.

# Completed car parks – Plac Na Groblach car park

Underground Plac na Groblach car park:

- ✓ launched at the end of 2009
- ✓ 600 parking spots
- ✓ 10 parking spots for disabled



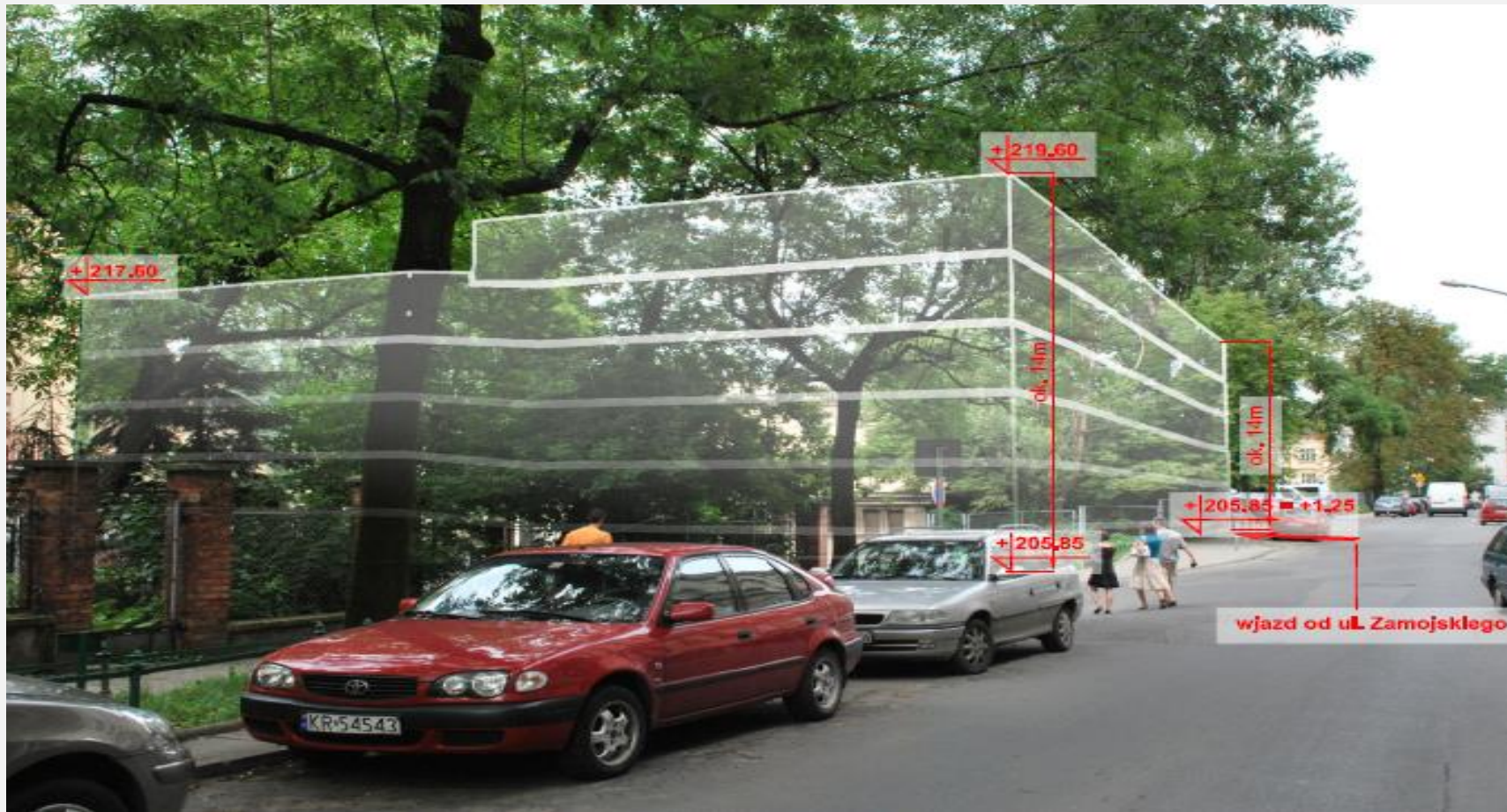
# Completed car parks – Car park by the National Museum

Underground car park by the National Museum:

- ✓ in service since November 2014
- ✓ 150 parking spots



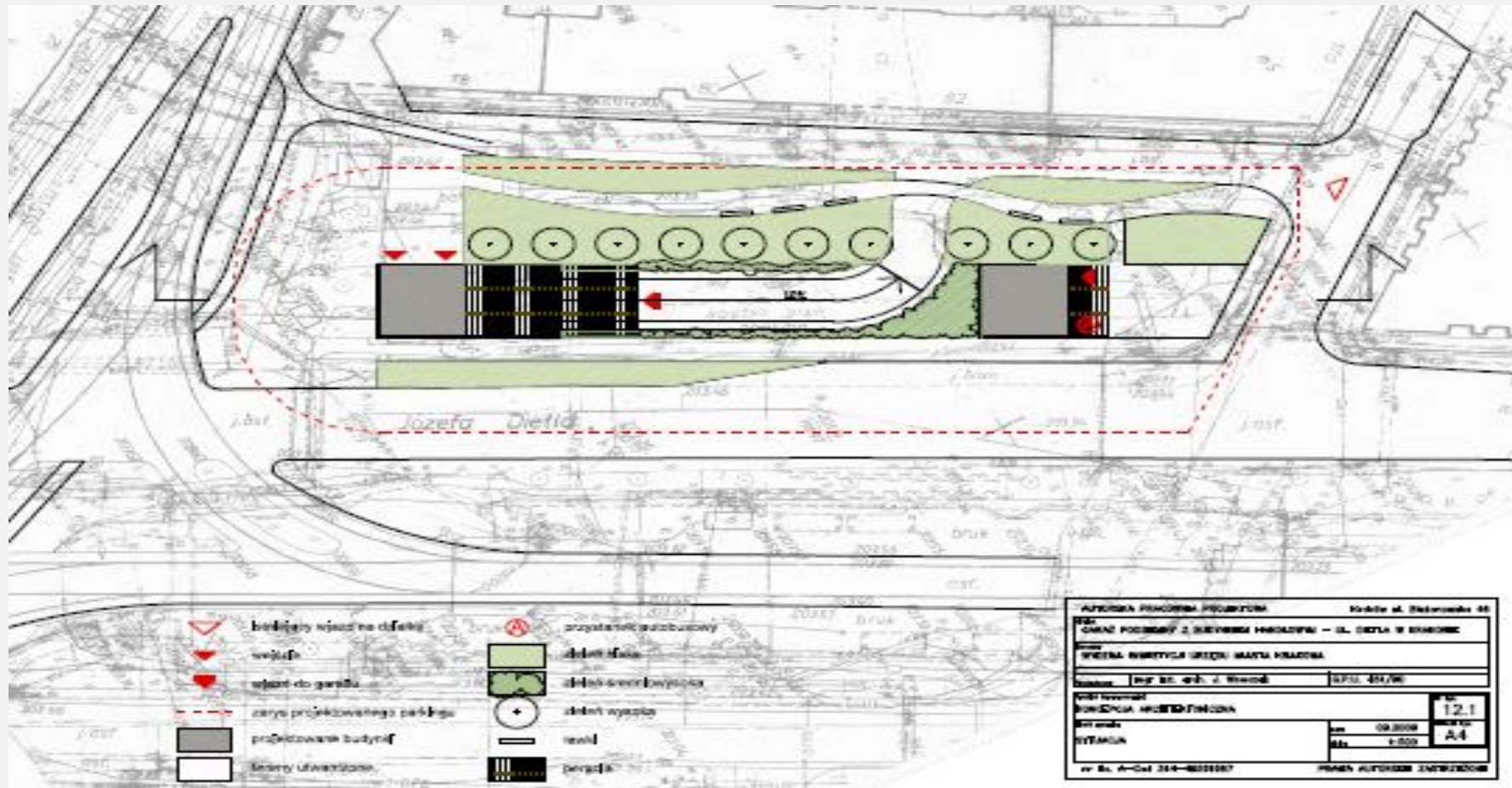
# Car parks under construction– Korona car park



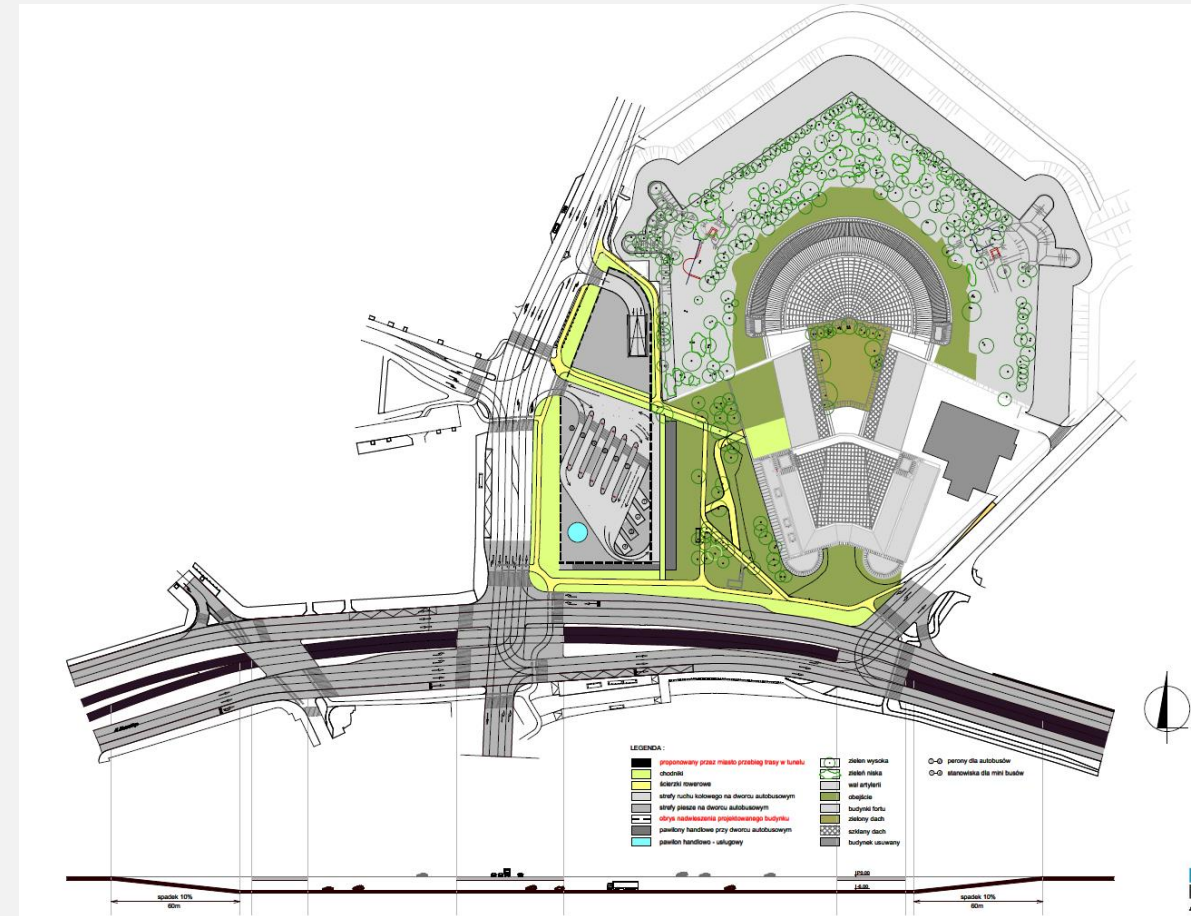
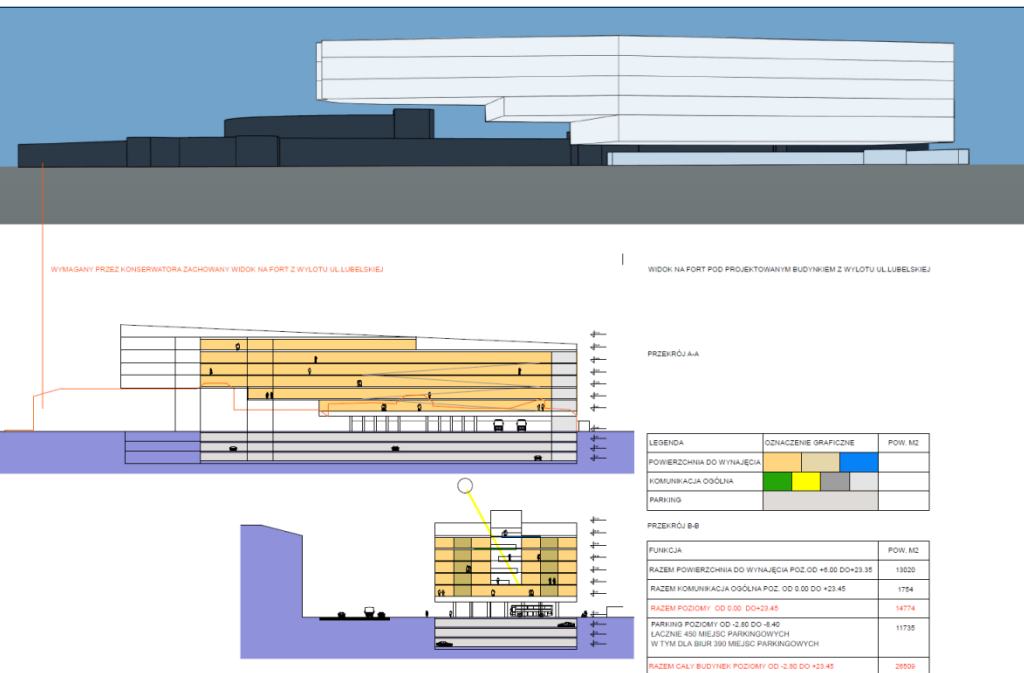


# Car parks in preparation for construction – Olimpijka car park

Parking Olimpijka – functional and utility concept



# Car parks prepared for implementation – Nowy Kleparz car park



# Car parks prepared for implementation – Rondo Mogilskie car park



# P&R car park

- ❖ P&R car parks construction – stage of implementation of objectives of the City transport policy
- ❖ Planned arrangement of car parks operating in the P&R system is supposed to encourage for the use of public transport, especially communication from the centre
- ❖ According to the adopted Krakow transport arrangement principles, car parks operating as P&R (treated as strategic car parks) shall be:
  - ✓ situated in the neighbourhood of III and IV bypass outside the housing and working areas
  - ✓ connected to fast and traditional tram lines (by the tram terminals) and railway (taking into consideration railway stations planned).

# P&R – current activities – P&R Kurdwanów

P&R car park situated underneath the Kurdwanów tram terminal overpass. Entrance facing Por. Halszki Street.

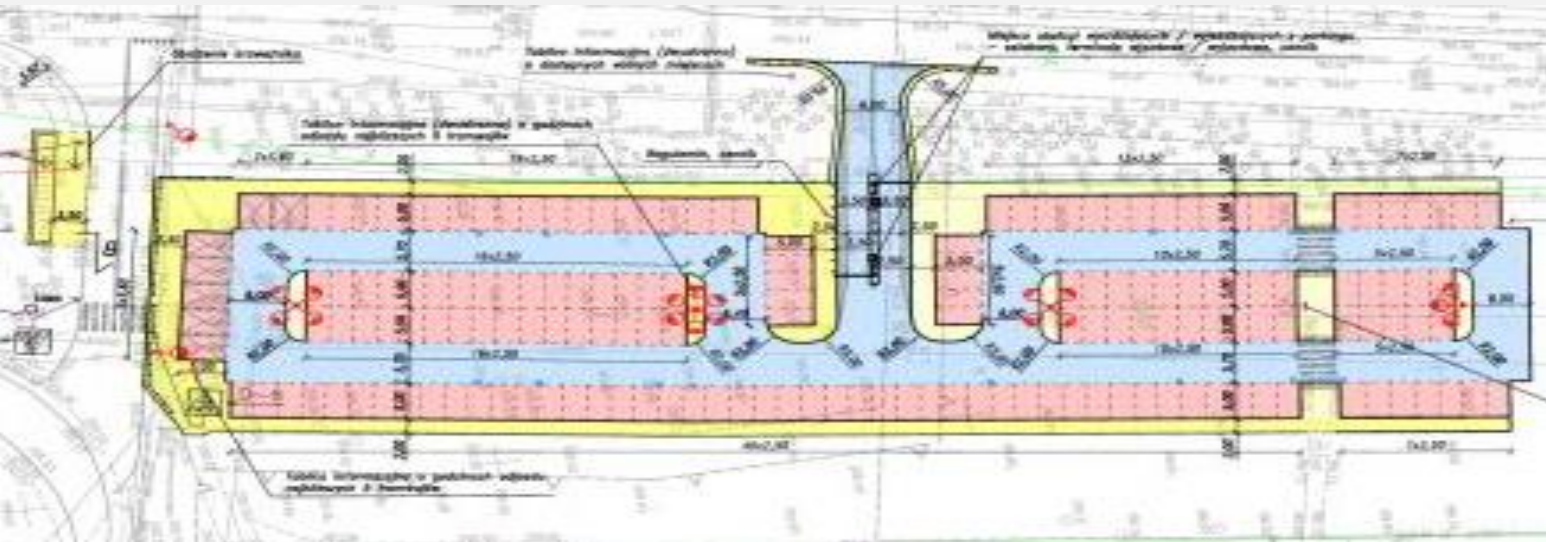
Estimated number of parking spots – 172.



# P&R – current activities – P&R Mały Płaszów

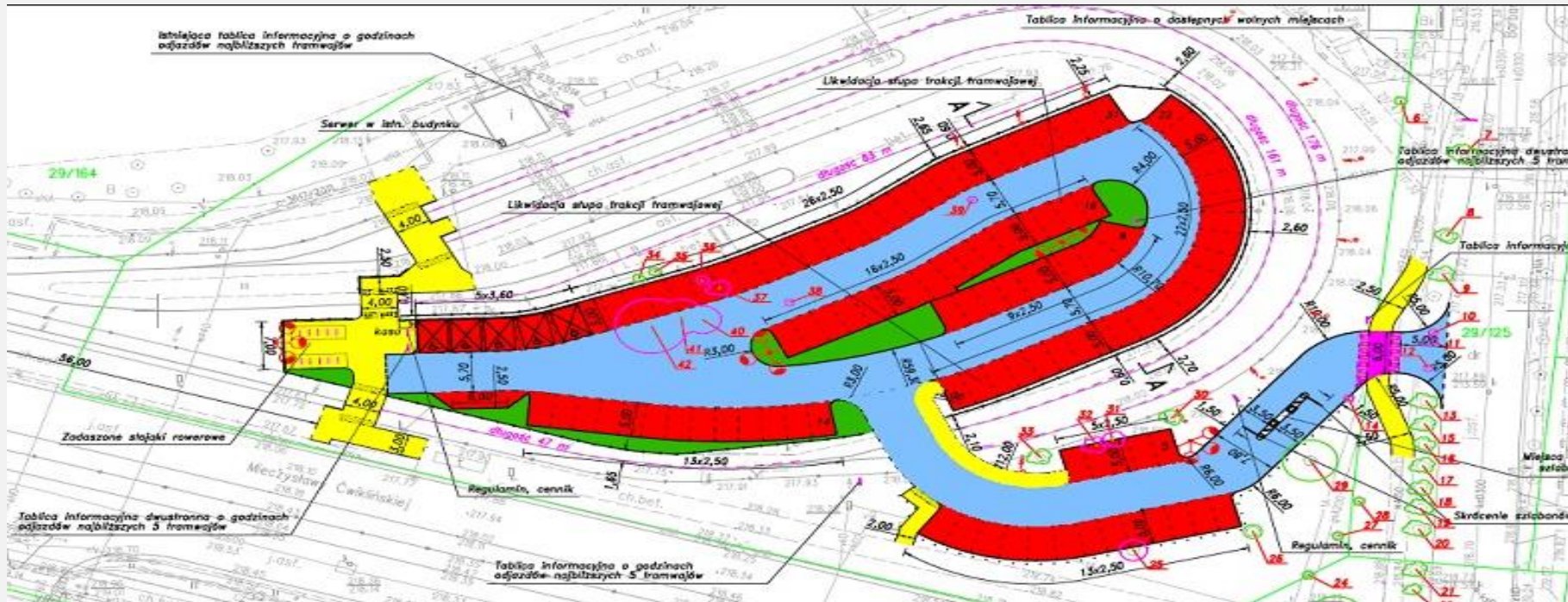
P&R car park is located in communal allotment directly neighbouring Mały Płaszów tram terminal. The entrance faces Lipska Boczna Street.

Estimated number of parking spots – 171.



# P&R – current activities – P&R Bieżanów

The investment in Bieżanów tram terminal. The entrance faces Św. Barbary Street. Estimated number of parking spots – 110.



# P&R – current activities

## P&R car parks submitted for implementation in the frameworks of the *Integrated Territorial Investments* - financial instrument

- ✓ Construction of integrated transport interchange and P&R Bronowice and bus terminal. *Estimated number of parking spots : 200*
- ✓ Construction of railway station SKA „Kraków Prądnik Czerwony” and construction of Park&Ride car park
- ✓ Construction of Kraków Sanktuarium station along line no. 94 and of a communication infrastructure
- ✓ Reconstruction of SKA „Kraków Swoszowice” railway station and construction of P&R car park  
*estimated number of parking spots: 150*





**Thank you for attention**

Łukasz Szewczyk  
Deputy Director  
Municipal Utilities Management Department  
e-mail: [Lukasz.Szewczyk@um.krakow.pl](mailto:Lukasz.Szewczyk@um.krakow.pl)

